

SCI

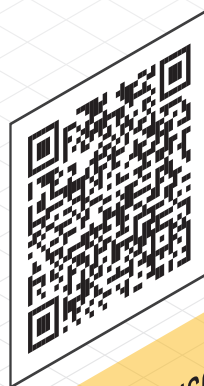
SCHILLER CLEANROOM
INTRALOGISTICS

clean moving.

LINEAR STOCKER

SCALABLE STORAGE SYSTEM
FOR RETICLE PODS

Clean solutions for pure efficiency.

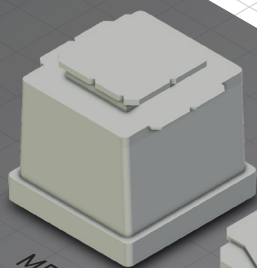


- Up to ISO class 4
- Storage Spaces: approx. 3000 (RSP)
- Length: 5400 mm
- Width: 1700 mm
- Height: 6000 mm
- Interfaces:
SEMI-E88 MCS / SEMI-E84 Transfer

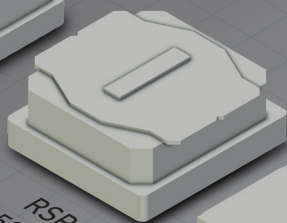
The Linear Stocker is our mid-sized storage system designed for the automated storage and retrieval of semiconductor reticles, but also wafer carriers or tools throughout various stages of the manufacturing process.

This is a support system of precision and efficiency paramount in the production of microelectronic devices, serving as a bridge between different tools and equipment, that ensures a smooth flow of production while maintaining product integrity and cleanliness.

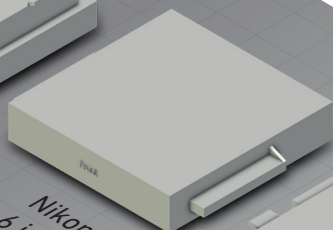
Available for all reticle pods such as:



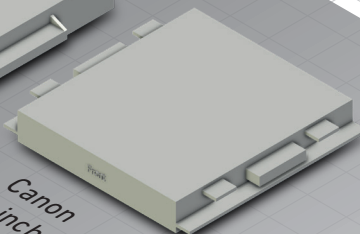
MRSP
150mm



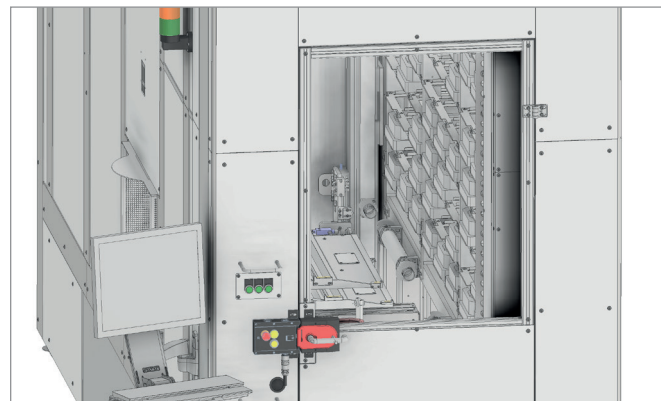
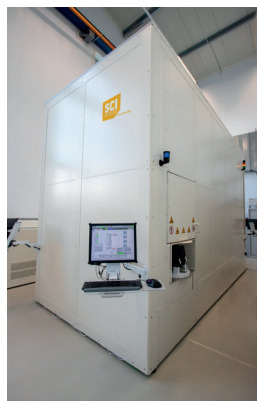
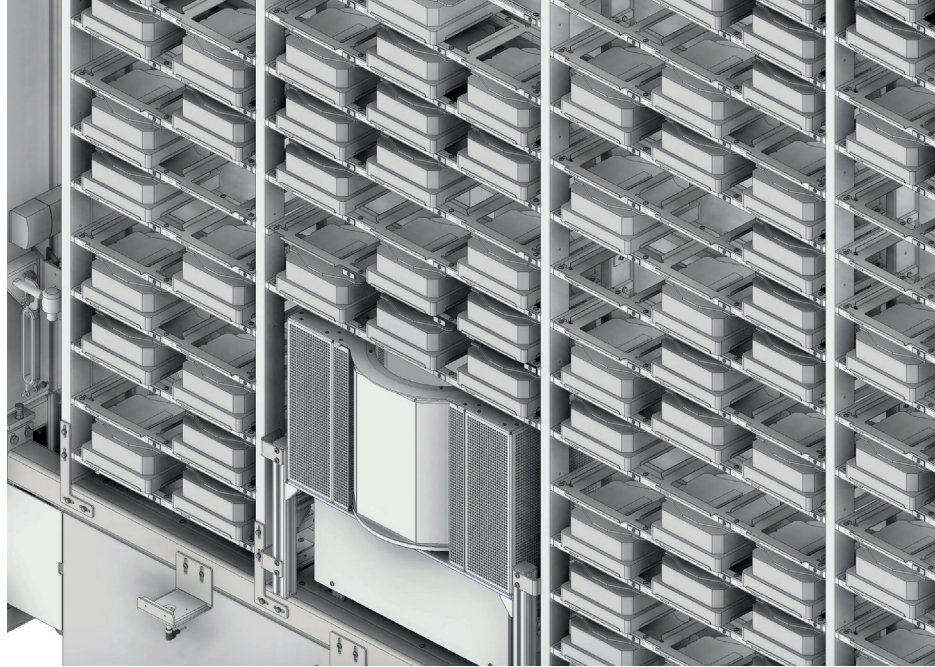
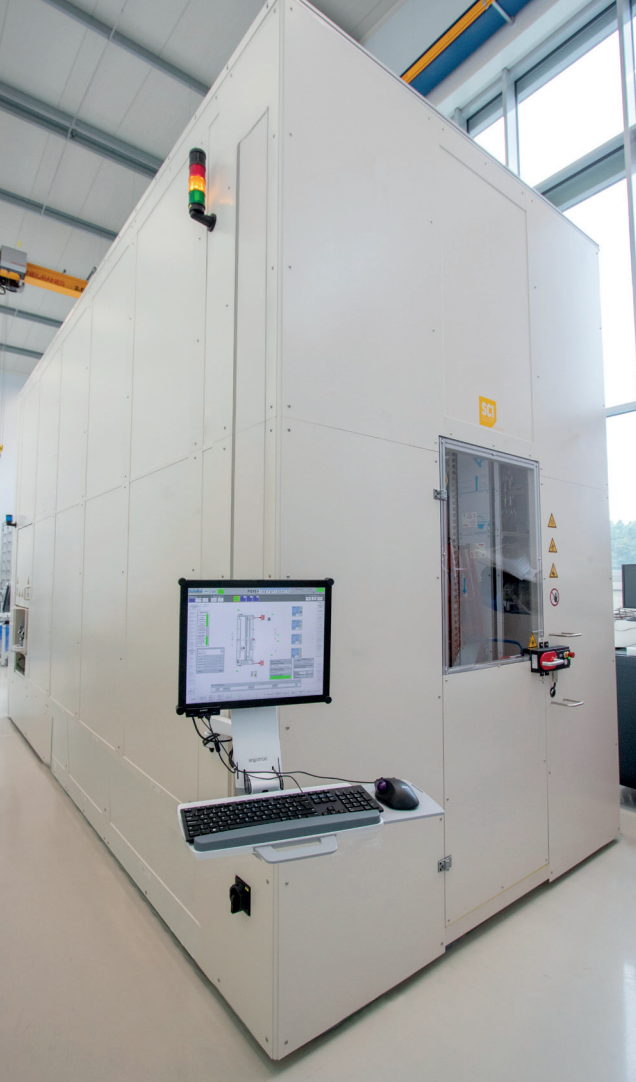
RSP
150mm



Nikon
6 inch



Canon
6 inch



KEY BENEFITS



Configuration and design optimized to customers' requirements.



Maximum uptime



Low cost of ownership



High storage density



Vibration free transport

SYSTEM EXTRAS AND OPTIONS

- Manual ports (rotary gates)
- OHT I/O connections
- Magnetic Conveyor extensions
- FFU (Fan filter units) in different ISO classes
- Fire Warnings / smoke extraction / security systems
- Cameras
- Extra door
- Extra computer administration point
- Connection to other equipment ports

Contact

SCI GmbH
Donau-Gewerbepark 30
94486 Osterhofen

phone +49 9932 9504 0
mail sci@schiller.de
web sci.schiller.de

Member of